

SHOES FOR CREWS[®]

THE SHOE THAT GRIPS[®]



ATHLETIC

BEST SELLER!
CONDOR
SEE PAGE 5, 19



CASUAL

BEST SELLER!
OLD SCHOOL IV
SEE PAGE 8, 22



DRESS

BEST SELLER!
CAMBRIDGE
SEE PAGE 26

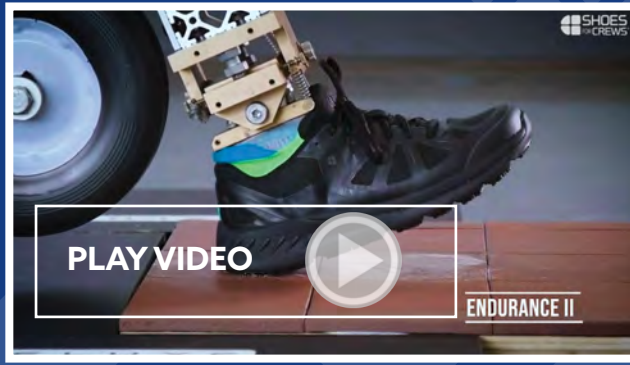


SAFETY

BEST SELLER!
FERGUS
SEE PAGE 28

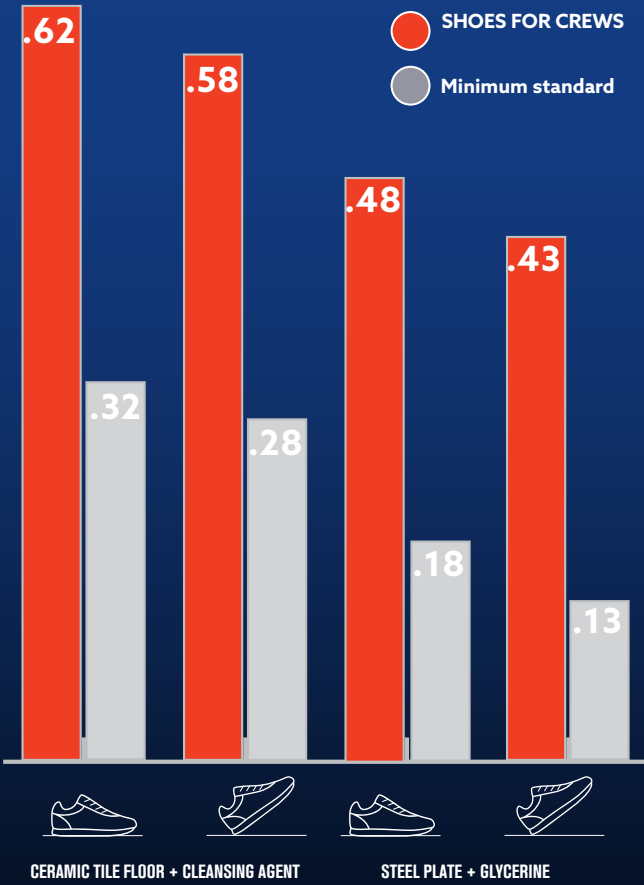
THE ORIGINAL SLIP-RESISTANT FOOTWEAR SINCE 1984

EN ND 2021



THE SHOE THAT GRIPS

SRC TEST RESULTS



Slip Resistance Test EN ISO 13287:2012, performed by TUV Rheinland LGA Products GmbH in Leipzig, Germany during January 2017. * On a scale where 0.0 is the absence of friction and 1.0 is very high friction (e.g. dry carpet), SFC rated .63 - more than tripling the .18 minimum standard. All SFC shoes use the Shoes For Crews patented slip-resistant outsole. Product tested: Bridgetown 28740.

SFC TECHNOLOGY



FEATURE

SpillGuard

BENEFIT

Protective membrane lining protects forefoot against hot liquid spills

FEATURE

Water Resistant uppers

BENEFIT

Keeping feet dry and comfortable

FEATURE

Removable insoles

BENEFIT

Enhanced comfort when you are on your feet for hours

FEATURE

Moisture absorbing lining

BENEFIT

Keeps feet dry

FEATURE

Cushioned midsole

BENEFIT

Added comfort

FEATURE

TripGuard

BENEFIT

Smoother transitions between floor surfaces

FEATURE

Clog resistant & flexible outsoles

BENEFIT

Limits amount of debris that sticks to outsole and bends with your natural foot movement

FEATURE

SUPERIOR SFC SLIP RESISTANT OUTSOLE

BENEFIT

Safer steps in slippery environments - featured on all SFC styles



CONTENTS

WOMEN'S

Athletic	4
Casual	7
Dress	12
Safety	15

ACCESSORIES

Mats	16
Crewguards	16
Insoles	17
Socks	17

MEN'S

Athletic	18
Casual	21
Dress	25
Safety	28

SHOES FOR CREWS™

EASY CLEAN TECHNOLOGY

Our Easy Clean slip-resistant outsole promotes self-cleaning and eliminates the hard to clean outsoles typically seen in slip resistant footwear. This SFC exclusive technology gives you superior slip resistance and helps you stay safe and clean.

ALL-DAY COMFORT

“Comfortable, stylish, great grip and hard wearing”
By Miss Evans

★ Trustpilot



Liberty

280 grams [based on size 38]

37255 Black 2.5-9 (35-43)
35353 Black/White 2.5-8 (35-42)



- Superior SFC slip-resistant outsole with TripGuard
- Water resistant
- Removable cushioned insole
- Regular fit

ADDITIONAL IMAGES



Revolution II

320 grams [based on size 38]

29167 Black 2.5-8 (35-42)
28093 White 2.5-8 (35-42)



- Superior SFC slip-resistant outsole with TripGuard
- Water resistant
- Removable cushioned insole
- Extra cushioning
- Regular fit

ADDITIONAL IMAGES



SLIP-RESISTANT



TRIPGUARD



WATER RESISTANT



SPILL GUARD



OB CERTIFIED

Spirit II

EN ISO 20347:2012 (OB E SRC) • 315 grams [based on size 38]

30531 Black 2.5-9 (35-43)



- Superior SFC slip-resistant outsole with TripGuard
- Microfibre upper
- Water resistant
- Removable cushioned insole
- Slim fit

[VIEW CERTIFICATE](#)
[ADDITIONAL IMAGES](#)



**CE CERTIFIED
STYLES**

Condor

EN ISO 20347:2012 (OB E SRC) • 390 grams [based on size 38]

26730 Black 2.5-9 (35-43)

27041 White 3-8 (36-42)



- Superior SFC slip-resistant outsole with TripGuard
- Water resistant, leather upper
- Removable cushioned insole
- Regular fit

[VIEW CERTIFICATE](#)
[ADDITIONAL IMAGES](#)



LIGHTWEIGHT

“ Very good and very comfortable. No laces, so slip on and off comfortably and don't have to deal with greasy laces. Pictures don't do them justice. They look trainer like in the photos but are actually quite smart. ” By Smith

★ Trustpilot



Karina

215 grams [based on size 38]

36907 Black 2.5-9 (35-43)

32709 White 2.5-8 (35-42)



- Superior SFC slip-resistant outsole with TripGuard
- Water resistant
- Lightweight
- Regular fit

ADDITIONAL IMAGES

Lila[®]



Vitality II

220 grams [based on size 38]

28362 Black 2.5-8 (35-42)

24759 Blue/Grey 2.5-8 (35-42)



- Superior SFC slip-resistant outsole with TripGuard
- Water resistant, breathable upper
- Lightweight
- Regular fit

ADDITIONAL IMAGES



ALL EVA CLOGS ARE
NOW CE CERTIFIED

WOMEN'S CASUAL

Zinc

EN ISO 20347:2012 (OB E SRC) • 270 grams [based on size 42]

66064 Black 3-14 (37-48)

62138 White 3-13 (37-47)



- Superior SFC slip-resistant outsole with TripGuard
- Water resistant
- Ultra-lightweight
- Wide fit

[VIEW CERTIFICATE](#)

[ADDITIONAL IMAGES](#)



Radium

EN ISO 20347:2012 (OB E SRC) • 250 grams [based on size 42]

69578 Black 3-13 (37-47)



- Superior SFC slip-resistant outsole with TripGuard
- Water resistant
- Ultra-lightweight
- Removable cushioned insole
- Wide fit

[VIEW CERTIFICATE](#)

[ADDITIONAL IMAGES](#)



“Fits perfect, good grip,
looks professional.
Can't complain”

By Tony

★ Trustpilot



CASUAL KICKS



Delray

430 grams [based on size 42]

38649 Black
2.5-12 (35-47)



- Superior SFC slip-resistant outsole
- Water-resistant Leather
- Removable cushioned insole
- Regular fit

[ADDITIONAL IMAGES](#)

Old School Low-Rider IV

355 grams [based on size 42]

38960 White
3-12 (36-47)



- Superior SFC slip-resistant outsole with TripGuard
- Water-resistant leather upper
- Removable insole
- Extra cushioning
- Regular fit

[ADDITIONAL IMAGES](#)



SLIP-RESISTANT



SPILL GUARD



TRIPGUARD



WATER RESISTANT

Improved
Upper
Material



THE NUMBER 1 CHOICE FOR CREWS
#1
CHOICE

Old School Low-Rider IV

355 grams [based on size 42]

36111 Black
2.5-12 (35-47)



- Superior SFC slip-resistant outsole with TripGuard
- Water-resistant leather upper
- Removable insole
- Extra cushioning
- Regular fit

ADDITIONAL IMAGES

Ollie II

210 grams [based on size 38]

36106 Black
2.5-9 (35-43)



- Superior SFC slip-resistant outsole
- Water resistant
- Leather upper
- Removable cushioned insole
- Regular fit

ADDITIONAL IMAGES

KITCHEN CASUALS

NEW! Triston II

EN ISO 20347:2012 (OB E SRC)

320 grams [based on size 38]

80047 Black
3-12 (36-47)

80048 White
3-12 (36-47)



- Superior SFC slip-resistant outsole with TripGuard
- Water-resistant microfiber upper
- Removable EVA cushioned insole
- Regular fit
- Available in composite safety toe see page 28

[VIEW CERTIFICATE](#)

[ADDITIONAL IMAGES](#)



Cater II

EN ISO 20347:2012 (OB E SRC)

410 grams [based on size 38]

40187 Black
2.5-8 (35-42)

Improved
Upper
Material



- Superior SFC slip-resistant outsole with TripGuard
- Water-resistant leather upper
- Removable cushioned insole
- Regular fit

[VIEW CERTIFICATE](#)

[ADDITIONAL IMAGES](#)



CE CERTIFIED
STYLES

Saloon II

EN ISO 20347:2012 (OB E SRC)

364 grams [based on size 38]

47808 Black
2.5-8 (35-42)

Improved
Upper
Material



- Superior SFC slip-resistant outsole with TripGuard
- Water-resistant leather upper
- Removable cushioned insole
- Regular fit

[VIEW CERTIFICATE](#)

[ADDITIONAL IMAGES](#)



**CE CERTIFIED
STYLES**



Maven

EN ISO 20347:2012 [OB E SRC]
355 grams [based on size 38]

M30390 Black
2.5-9 (35-43)

- Superior slip-resistant traction by Shoes For Crews®
- 100% Vegan
- Removable comfortable PU gel insole
- Water-resistant, waxed canvas upper
- Elastic goring for a slip-on style
- Optional laces for a classic sneaker look
- Three-hole arch ventilation for breathability
- Easy to clean and treated with 3M Scotchgard™ Protector

[VIEW CERTIFICATE](#)

[ADDITIONAL IMAGES](#)



Mavi

EN ISO 20347:2012 [OB E SRC]*
360 grams [based on size 38]

M31174 Black
2.5-9 (35-43)

- Superior slip-resistant traction by Shoes For Crews®
- Heel counter for support and stability
- Removable comfortable PU gel insole
- Elastic goring for a slip-on style
- Optional laces for a classic sneaker look
- Three-hole arch ventilation for breathability
- Water-resistant, full-grain leather upper

[VIEW CERTIFICATE](#)

[ADDITIONAL IMAGES](#)

MOZO: STYLE,
PERFORMANCE
& SLIP-RESISTANCE
PERFECT FOR
ANY CULINARY
ENVIRONMENT

BEST DRESSED



Rated Excellent



Reese

EN ISO 20347:2012 (OB E SRC) • 195 grams [based on size 38]

57160 Black
2.5-8 (35-42)



- Superior SFC slip-resistant outsole with TripGuard
- Water resistant leather upper
- Removable cushioned insole
- Slim fit

[VIEW CERTIFICATE](#)

[ADDITIONAL IMAGES](#)

CE CERTIFIED
STYLES



Madison III

EN ISO 20347:2012 (OB E SRC) • 220 grams [based on size 38] • 2.5cm heel

57889 Black
2.5-8 (35-42)



- Superior SFC slip-resistant outsole with TripGuard
- Water resistant leather upper
- Removable cushioned insole
- Slim fit

[VIEW CERTIFICATE](#)

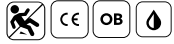
[ADDITIONAL IMAGES](#)



Mary Jane II

EN ISO 20347:2012 (OB E SRC) • 290 grams [based on size 38]

3002 Black
2.5-9.5 (35-44)



- Superior SFC slip-resistant outsole
- Water resistant
- Leather upper
- Comfort fitting with adjustable strap fastener
- Wide fit

[VIEW CERTIFICATE](#)

[ADDITIONAL IMAGES](#)



CE CERTIFIED STYLES

Envy III

EN ISO 20347:2012 (OB E SRC) • 255 grams [based on size 38] • 3.8cm heel

52263 Black
2.5-8 (35-42)



- Superior SFC slip-resistant outsole with TripGuard
- Water resistant leather upper
- Removable cushioned insole
- Slim fit

[VIEW CERTIFICATE](#)

[ADDITIONAL IMAGES](#)



Willa

EN ISO 20347:2012 (OB E SRC) • 290 grams [based on size 38] • 3.8cm heel

55452 Black
2.5-8 (35-42)



- Superior SFC slip-resistant outsole with TripGuard
- Water resistant leather upper
- Removable cushioned insole
- Slim fit

[VIEW CERTIFICATE](#)

[ADDITIONAL IMAGES](#)



Jasmine

170 grams [based on size 38]

51905 Black
2.5-8 (35-42)



- Superior SFC slip-resistant outsole with Tripguard
- Water resistant leather upper
- Dual density removable memory foam EVA insole
- Lightweight design
- Slim fit

ADDITIONAL IMAGES

Lifa[®]



Jenni

200 grams [based on size 38]

3616 Black
2.5-8 (35-42)



- Superior SFC slip-resistant outsole
- Water resistant leather upper
- Cushioned insole
- Regular fit

ADDITIONAL IMAGES



Marla

270 grams [based on size 38] • 4.4cm heel

57487 Black
2.5-8 (35-42)



- Superior SFC slip-resistant outsole with TripGuard
- Water resistant leather upper
- Additional comfortable cushioning
- Removable cushioned insole
- Slim fit

ADDITIONAL IMAGES



Kora

305 grams [based on size 38] • 2.5cm heel

52152 Black
2.5-8 (35-42)



- Superior SFC slip-resistant outsole with TripGuard
- Water resistant leather upper
- Removable cushioned insole
- Slim fit

ADDITIONAL IMAGES



SLIP-RESISTANT



SPILL GUARD



TRIPGUARD



WATER RESISTANT



OB CERTIFIED



BONNIE WOMEN'S
COMPOSITE SAFETY
TOE KEEPS YOU
COMFORTABLE & SAFE

Evie

EN ISO 20345:2011 (S1) • 385 grams [based on size 38]

75810 Black
3-8 (36-42)

75001 White
3-8 (36-42)



- Superior SFC slip-resistant outsole with TripGuard
- Water resistant
- Composite toe - 200 joule
- Removable cushioned insole
- Clog resistant outsole
- Regular fit

[VIEW CERTIFICATE](#)

[ADDITIONAL IMAGES](#)



CE CERTIFIED
STYLES

Bonnie

EN ISO 20345:2011 (S3) • 450 grams [based on size 38]

78393 Black
3-8 (36-42)



- Superior SFC slip-resistant outsole with TripGuard
- Waterproof microfibre upper
- Composite toe - 200 joules
- Removable cushioned insole
- Puncture and clog resistant
- Black laces included
- Regular fit

[VIEW CERTIFICATE](#)

[ADDITIONAL IMAGES](#)



FOR MORE SAFETY STYLES SEE PAGES 28-35

Crewguard® for Men and Women

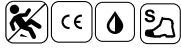
SFC MightyGrip® Slip-resistant Outsole
Provides Maximum Slip & Fall Protection

CE CERTIFIED
STYLES

Safety Crewguard®

EN ISO 20345:2011

Style: 53



[VIEW CERTIFICATE](#)



Stretch Crewguard®

EN ISO 20347:2012

Style: G7014



[VIEW CERTIFICATE](#)



Ideal for visitors, new hires or any employee not already wearing our superior slip resistant footwear

CrewGuard® Sizes	XXS	XS	S	S+	M	M+	L	XL	XXL
STYLE 53: Men's	-	35-37	37-38	39-41	41-42	43-44	44-45	46-48	49-51
STYLE 53: Women's	32-34	35-38	38-39	40-42	42-43	44-45	-	-	-
STYLE G7014 Men/Women	-	-	34-37	-	38-41	-	42-45	46-48	-

MIGHTYMAT!®

We have you covered

SLIP-PROOF ANY FLOOR!

When employees have both feet safely on the mat, they work faster and more efficiently. With MightyMat!® slip-resistant floor mats, any greasy, slippery walkway becomes a safe, high-traction surface.

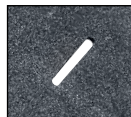
MIGHTYMAT CLASSIC

Style 20:
Dimensions 91.44cm X 152.40 cm
Thickness 6.5 mm

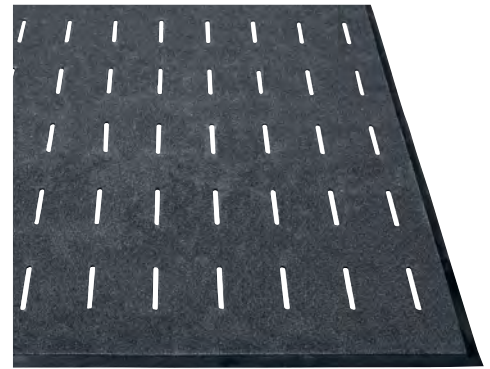
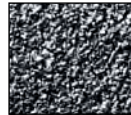
Our patented slip-resistant base keeps mat in place



Drainage slots direct liquids away from surface



All-grit, high-traction, slip-resistant surface



MIGHTYMAT MAX II

Style 40:
Dimensions 91.44cm X 121.92 cm
Thickness 14.8 mm

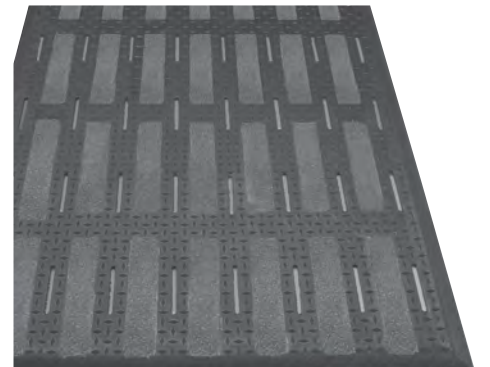
Anti-fatigue nodules add cushioning



Cross section of cushioned anti-fatigue layer



Our patented slip-resistant base keeps mat in place





SFC Comfort Insole

N3411 Unisex: Blue
4-15 (37-50)



SFC Comfort Insole with Gel

N2114 Unisex: Blue
4-13 (37-48)



Gel pads in heel and forefoot for increased cushioning and shock absorption



THE SCIENCE OF KEEPING SKIN DRY

MOISTURE IS THE ENEMY. Drymax® socks feature an anti-blister system: exceptional 3D fit; seamless insides; instep-hugging arch band; dry skin because Drymax® socks stay dry.

STAY DRY. STAY SAFE. Drymax® socks have top and/or bottom air vents, use dense padding for comfort and are infused with antimicrobial fibers to fight odour.

SFC Crew Sock

- Unisex: S1810 Black (1 pair per package)
S, M, L, XL
- Dual layer breathable mesh
 - Anti-slip wedge
 - Vented arch band



SFC No-Show Sock

- Unisex: S1297 Black (1 pair per package)
S, M, L, XL
- Dual layer breathable mesh
 - Anti-slip wedge
 - Vented arch band



WORKPLACE ATHLETE

Freestyle II

335 grams [based on size 42]

38140 Black
5-13 (38-48)

32835 Black/White
5-13 (38-48)



- Superior SFC slip-resistant outsole with TripGuard
- Water resistant
- Removable cushioned insole
- Regular fit

ADDITIONAL IMAGES



“Comfortable and lightweight. Easy to wear for a 7 hour shift.”

By Emma

★ Trustpilot



Evolution II

380 grams [based on size 42]

21211 Black
5-15 (38-50)

28289 White
5-14 (38-49)



- Superior SFC slip-resistant outsole with TripGuard
- Water resistant
- Removable cushioned insole
- Extra cushioning
- Regular fit

ADDITIONAL IMAGES



SLIP-RESISTANT



TRIPGUARD



WATER RESISTANT

“Really happy with the shoes. Great service and fast delivery. Quality and comfort are great.”

By Michael Guy



Condor

EN ISO 20347:2012 (OB E SRC) • 435 grams [based on size 42]

28777 Black
5-13 (38-48)

29166 White
5-12 (38-47)



- Superior SFC slip-resistant outsole with TripGuard
- Water resistant, leather upper
- Removable cushioned insole
- Regular fit

[VIEW CERTIFICATE](#)
[ADDITIONAL IMAGES](#)



CE CERTIFIED STYLES

Nitro II

EN ISO 20347:2012 (OB E SRC) • 370 grams [based on size 42]

36097 Black
6-12 (39-47)



- Superior SFC slip-resistant outsole with TripGuard
- Microfibre upper
- Water resistant
- Removable cushioned insole
- Slim fit

[VIEW CERTIFICATE](#)
[ADDITIONAL IMAGES](#)



Endurance II

280 grams [based on size 42]

22782 Black

6-15 (39-50)



- Superior SFC slip-resistant outsole with TripGuard
- Water resistant, breathable upper
- Lightweight
- Regular fit

ADDITIONAL IMAGES



Grayson

255 grams [based on size 42]

36479 Black

5-13 (38-48)



- Superior SFC slip-resistant outsole with TripGuard
- Water resistant, lightweight upper
- Removable cushioned insole
- Regular fit

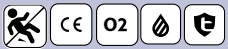
ADDITIONAL IMAGES



Stratton III - Waterproof Occupational Boot

EN ISO 20347:2012 (O2) • 584 grams [based on size 42]

Unisex: 64666 Black 3-13 (36-48)



- Superior SFC slip-resistant outsole with TripGuard
- Waterproof Leather upper
- No safety toe cap
- Removable cushioned insole
- Regular fit
- Clog-resistant

[VIEW CERTIFICATE](#)
ADDITIONAL IMAGES

CE CERTIFIED
STYLES



Zinc

EN ISO 20347:2012 (OB E SRC) • 270 grams [based on size 42]

66064 Black 3-14 (37-48) **62138 White** 3-13 (37-47)



- Superior SFC slip-resistant outsole with TripGuard
- Water resistant
- Ultra-lightweight
- Wide fit

[VIEW CERTIFICATE](#)
[ADDITIONAL IMAGES](#)



**ALL EVA CLOGS ARE
 NOW CE CERTIFIED**

Radium

EN ISO 20347:2012 (OB E SRC) • 250 grams [based on size 42]

69578 Black
 3-13 (37-47)



- Superior SFC slip-resistant outsole with TripGuard
- Water resistant
- Ultra-lightweight
- Removable cushioned insole
- Wide fit

[VIEW CERTIFICATE](#)
[ADDITIONAL IMAGES](#)



“Very comfortable, good price, good quality.”

By Sook Fun Wong

★ Trustpilot



COOL CASUAL CLASSICS

Delray

430 grams [based on size 42]

38649 Black
2.5-12 (35-47)



- Superior SFC slip-resistant outsole
- Water-resistant Leather upper
- Removable cushioned insole
- Regular fit

ADDITIONAL IMAGES



Improved
Upper
Material

Ollie II

325 grams [based on size 42]

34257 Black
5-12 (38-47)



- Superior SFC slip-resistant outsole
- Water resistant
- Leather upper
- Removable cushioned insole
- Regular fit

ADDITIONAL IMAGES



Old School Low-Rider IV

375 grams [based on size 42]

36111 Black 38960 White
2.5-12 (35-47) 3-12 (36-47)



- Superior SFC slip-resistant outsole with TripGuard
- Water-resistant leather upper
- Removable insole
- Extra cushioning
- Regular fit

ADDITIONAL IMAGES



Improved
Upper
Material



“Second pair I’ve had in 3 years, absolutely brilliant, comfy, excellent grip and wear very well.”

By Samantha Benson

★ Trustpilot



Grind

EN ISO 20347:2012 [OB E SRC]
445 grams [based on size 42]



M31165 Black
6-12 (39-47)

- Superior slip-resistant traction by Shoes For Crews®
- 100% Vegan
- Removable comfort PU Gel insole
- Water-resistant, waxed canvas upper
- Elastic goring for a slip-on style
- Optional laces for a classic look
- Three-hole arch ventilation for breathability
- Easy to clean and treated with 3M Scotchgard™ Protector

[VIEW CERTIFICATE](#)
[ADDITIONAL IMAGES](#)



Finn

EN ISO 20347:2012 [OB E SRC]
460 grams [based on size 42]



M11057 Black
6-12 (39-47)

- Superior slip-resistant traction by Shoes For Crews®
- Heel counter for support and stability
- Removable comfort PU Gel insole
- Elastic goring for a slip-on style
- Optional laces for a classic sneaker look
- Three-hole arch ventilation for breathability
- Water-resistant, full-grain leather upper

[VIEW CERTIFICATE](#)
[ADDITIONAL IMAGES](#)



“Amazingly comfortable and very hard-wearing and they really do what you say they do, my last pair lasted me years, if you work in the restaurant or bar industry these are most definitely the shoes for you.”

By Paul Holmes

★ Trustpilot



KITCHEN CASUALS

NEW! Triston II

EN ISO 20347:2012 (OB E SRC)

335 grams [based on size 42]

80047 Black
3-12 (36-47)

80048 White
3-12 (36-47)



- Superior SFC slip-resistant outsole with TripGuard
- Water-resistant microfiber upper
- Removable EVA cushioned insole
- Regular fit
- Available in composite safety toe see page 28

[VIEW CERTIFICATE](#)

[ADDITIONAL IMAGES](#)



CE CERTIFIED
STYLES

Cater II

EN ISO 20347:2012 (OB E SRC)

410 grams [based on size 42]

41439 Black
5-15 (38-50)



Improved
Upper
Material

- Superior SFC slip-resistant outsole with TripGuard
- Water-resistant leather upper
- Removable cushioned insole
- Regular fit

[VIEW CERTIFICATE](#)

[ADDITIONAL IMAGES](#)



Saloon II

EN ISO 20347:2012 (OB E SRC)

451 grams [based on size 42]

43261 Black
5-15 (38-50)



Improved
Upper
Material

- Superior SFC slip-resistant outsole with TripGuard
- Water-resistant leather upper
- Removable cushioned insole
- Regular fit

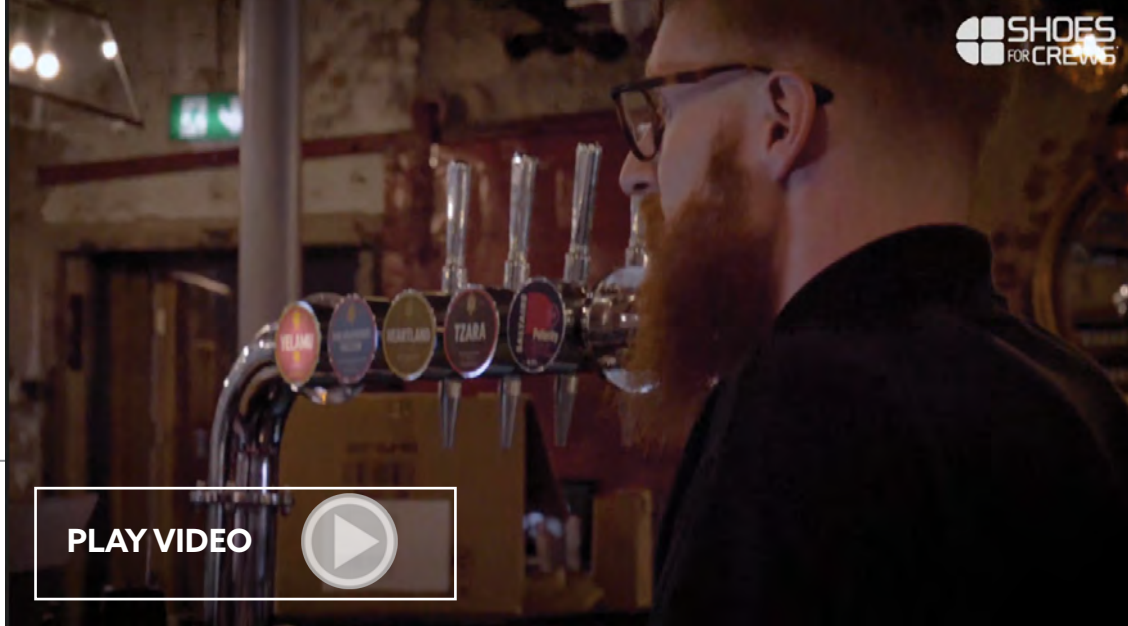
[VIEW CERTIFICATE](#)

[ADDITIONAL IMAGES](#)





Rated Excellent



Statesman

425 grams [based on size 42]

1202 Black
6-12 (39-47)



- Superior SFC slip-resistant outsole
- Water resistant, leather upper
- Removable cushioned insole
- Regular fit

ADDITIONAL IMAGES



Senator

460 grams [based on size 42]

1201 Black
5-12 (38-47)

1211 Brown
6-12 (39-47)



- Superior SFC slip-resistant outsole
- Water resistant, leather upper
- Removable cushioned insole
- Regular fit

ADDITIONAL IMAGES



“Great comfortable shoes!!
Should have brought them sooner !”

By Andy Howels

★ Trustpilot



Cambridge III

EN ISO 20347:2012 (OB E SRC) • 460 grams [based on size 42]

20321 Black
5-13.5 (38-49)



- Superior SFC slip-resistant outsole
- Water resistant, leather upper
- Removable cushioned insole
- Regular fit

[VIEW CERTIFICATE](#)
[ADDITIONAL IMAGES](#)



**CE CERTIFIED
STYLES**

Ambassador II

EN ISO 20347:2012 (OB E SRC) • 350 grams [based on size 42]

20331 Black
6-12 (39-47)



- Superior SFC slip-resistant outsole
- Water resistant, leather upper
- Removable cushioned insole
- Slim fit

[VIEW CERTIFICATE](#)
[ADDITIONAL IMAGES](#)



Executive Wing Tip IV

EN ISO 20347:2012 (OB E SRC) • 460 grams [based on size 42]

20301 Black
5-12 (38-47)



- Superior SFC slip-resistant outsole
- Water resistant, leather upper
- Removable cushioned insole
- Regular fit

[VIEW CERTIFICATE](#)

[ADDITIONAL IMAGES](#)



New Easy Clean Outsole

Aristocrat III

EN ISO 20347:2012 (OB E SRC) • 440 grams [based on size 42]

2031 Black
5-12 (38-47)



- Superior SFC slip-resistant outsole
- Water resistant, leather upper
- Removable cushioned insole
- Regular fit

[VIEW CERTIFICATE](#)

[ADDITIONAL IMAGES](#)



STAY SAFE AND COMFORTABLE
WITH THE PROFESSIONAL LOOKING ARISTOCRAT III

Introducing the New Safety Range from Shoes For Crews

NEW! Colly

EN ISO 20345:2011 (S3)
540 grams [based on size 44]

Unisex: 75659 Black 36-48 (3-13)



- Superior, easy clean SFC slip-resistant outsole with TripGuard
- Waterproof microfibre upper
- Nano composite toe cap - 200 joules
- Puncture resistant
- Removeable cushioned insole
- Regular fit

[VIEW CERTIFICATE](#)
[ADDITIONAL IMAGES](#)



CE CERTIFIED
STYLES



NEW! Fergus - Black

EN ISO 20345:2011 (S3) • 580 grams [based on size 44]

Unisex: 78493 Black 36-48 (3-13)



- Superior, easy clean SFC slip-resistant outsole with TripGuard
- Waterproof leather upper
- Nano composite toe - 200 joules
- Puncture resistant
- Removeable cushioned insole
- Slim fit

[VIEW CERTIFICATE](#)
[ADDITIONAL IMAGES](#)

NEW! Fergus - Denim

EN ISO 20345:2011 (S3) • 580 grams [based on size 44]

Unisex: 79778 Black 36-48 (3-13)



- Superior, easy clean SFC slip-resistant outsole with TripGuard
- Waterproof leather and denim upper
- Nano composite toe - 200 joules
- Puncture resistant
- Removeable cushioned insole
- Slim fit

[VIEW CERTIFICATE](#)
[ADDITIONAL IMAGES](#)

NEW! Brandon

EN ISO 20345:2011 (S3)

585 grams [based on size 44]

Unisex: 76640 Black 36-48 (3-13)

Unisex: 76641 White 36-48 (3-13)



- Superior, SFC slip and clog resistant outsole with TripGuard
- Waterproof microfibre upper
- Nano composite toe cap - 200 joules
- Puncture resistant
- Removeable cushioned insole
- Regular fit

[VIEW CERTIFICATE](#)
[ADDITIONAL IMAGES](#)



CE CERTIFIED
STYLES

NEW! Barra

EN ISO 20345:2011 (S3)

585 grams [based on size 44]

Unisex: 72503 Black 36-48 (3-13)



- Superior, SFC slip and clog resistant outsole with TripGuard
- Waterproof microfibre upper
- Nano composite toe cap - 200 joules
- Puncture resistant
- Removeable cushioned insole
- Regular fit

[VIEW CERTIFICATE](#)
[ADDITIONAL IMAGES](#)



NEW! Forkhill

EN ISO 20345:2011 (S3)

585 grams [based on size 44]

Unisex: 79112 Black 36-48 (3-13)



- Superior, SFC slip and clog resistant outsole with TripGuard
- Reinforced waterproof microfibre upper
- Nano composite toe - 200 joules
- Puncture resistant
- Removeable cushioned insole
- Regular fit

[VIEW CERTIFICATE](#)
[ADDITIONAL IMAGES](#)





SAFETY FIRST

NEW! Triston II SB

EN ISO 20345:2011 (SB SRC)

415 grams [based on size 42]

Unisex: 80045 Black 3-12 (36-47)

Unisex: 80046 White 3-12 (36-47)



- Superior SFC slip-resistant outsole with TripGuard
- Water-resistant microfiber upper
- Composite toe - 200 joules
- Removable EVA cushioned insole
- Regular fit

[VIEW CERTIFICATE](#)

[ADDITIONAL IMAGES](#)



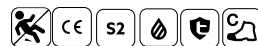
NEW!
CE Certified
 range of safety
 shoes from
 Shoes For
 Crews



Engineer III

EN ISO 20345:2011 (S2) • 718 grams [based on size 42]

Unisex: 76736 Black 3-13 (36-48)



- Superior SFC slip-resistant outsole with TripGuard
- Waterproof Leather upper
- Composite toe - 200 joules
- Removable cushioned insole
- Regular fit
- Clog-resistant

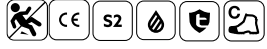
[VIEW CERTIFICATE](#)

[ADDITIONAL IMAGES](#)

Tillman III

EN ISO 20345:2011 (S2) • 692 grams [based on size 42]

Unisex: 79494 Black 3-13 (36-48)



- Superior SFC slip-resistant outsole with TripGuard
- Waterproof Leather upper
- Composite toe - 200 joules
- Removable cushioned insole
- Regular fit
- Clog-resistant

[VIEW CERTIFICATE](#)

[ADDITIONAL IMAGES](#)



Clyde

EN ISO 20345:2011 (S3) • 555 grams [based on size 42]

Men's: 73403 Black 5-12 (38-47)



- Superior SFC slip-resistant outsole with TripGuard
- Waterproof microfibre upper
- Composite toe - 200 joules
- Puncture and clog-resistant
- Removable cushioned insole
- Black laces included
- Regular fit

[VIEW CERTIFICATE](#)

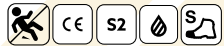
[ADDITIONAL IMAGES](#)



Cambridge ST

EN ISO 20345:2011 (S2) • 610 grams [based on size 42]

Men's: 5215 Black 5-13 (38-48)



- Superior SFC slip-resistant outsole
- Waterproof microfibre upper
- Steel toe - 200 joules
- Removable cushioned insole
- Regular fit

[VIEW CERTIFICATE](#)

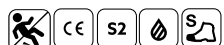
[ADDITIONAL IMAGES](#)



Executive Wing Tip ST

EN ISO 20345:2011 (S2) • 590 grams [based on size 42]

Men's: 52181 Black 5-12 (38-47)



- Superior SFC slip-resistant outsole
- Waterproof leather upper
- Steel toe - 200 joules
- Removable cushioned insole
- Regular fit

[VIEW CERTIFICATE](#)

[ADDITIONAL IMAGES](#)





THE SAFETY JOGGER RANGE FEATURES HIGH-PERFORMANCE TRACTION BY SHOES FOR CREWS

Roma81

EN ISO 20345:2011 (S3)

695 grams [based on size 41]

Unisex: 74785 Black 2.5-13 (35-48)



- Superior SFC slip-resistant outsole with TripGuard
- Waterproof coated leather upper
- Steel toe - 200 joules
- Puncture and clog resistant
- Regular fit

[VIEW CERTIFICATE](#)

[ADDITIONAL IMAGES](#)



CE CERTIFIED
STYLES

Dolce81

EN ISO 20345:2011 (S3)

650 grams [based on size 41]

Unisex: 76236 Black 2.5-13 (35-48)



- Superior SFC slip-resistant outsole with TripGuard
- Waterproof coated leather upper
- Steel toe - 200 joules
- Puncture and clog resistant
- Regular fit

[VIEW CERTIFICATE](#)

[ADDITIONAL IMAGES](#)



ORDER TODAY! www.sfceurope.com



THE NUMBER 1 CHOICE FOR CHEFS
#1
 CHOICE

Gusto81

EN ISO 20345:2011 (S3)
 650 grams [based on size 41]



Unisex: 73695 White 2.5-13 (35-48)



- Superior SFC slip-resistant outsole with TripGuard
- Waterproof coated leather upper
- Steel toe - 200 joules
- Puncture and clog resistant
- Regular fit

[VIEW CERTIFICATE](#)

[ADDITIONAL IMAGES](#)

**CE CERTIFIED
 STYLES**

Volluto81

EN ISO 20345:2011 (S3)
 695 grams [based on size 41]



Unisex: 74518 White 2.5-13 (35-48)



- Superior SFC slip-resistant outsole with TripGuard
- Waterproof coated leather upper
- Steel toe - 200 joules
- Puncture and clog resistant
- Regular fit

[VIEW CERTIFICATE](#)

[ADDITIONAL IMAGES](#)

Lungo81

EN ISO 20345:2011 (S3)
 725 grams [based on size 41]



Unisex: 75966 White 2.5-13 (35-48)



- Superior SFC slip-resistant outsole with TripGuard
- Waterproof coated leather upper
- Steel toe - 200 joules
- Puncture and clog resistant
- Regular fit

[VIEW CERTIFICATE](#)

[ADDITIONAL IMAGES](#)



**THE IDEAL
 SAFETY SHOES
 FOR KITCHENS,
 BAKERIES AND
 FACTORIES.**



CE CERTIFIED STYLES

X1100N81

EN ISO 20345:2011 (S3)

729 grams [based on size 41]

Unisex: 73924 Black 3.5-13 (36-48)



- Superior SFC slip-resistant outsole with TripGuard
- Waterproof coated leather upper
- Steel toe - 200 joules
- Puncture and clog resistant
- Regular fit

[VIEW CERTIFICATE](#)

[ADDITIONAL IMAGES](#)



X111081

EN ISO 20345:2011 (S3)

690 grams [based on size 41]

Unisex: 74670 Black 3.5-13 (36-48)



- Superior SFC slip-resistant outsole with TripGuard
- Waterproof coated leather upper
- Steel toe - 200 joules
- Puncture and clog resistant
- Regular fit

[VIEW CERTIFICATE](#)

[ADDITIONAL IMAGES](#)



SAFETY WELLINGTONS

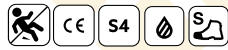


Bastion

EN ISO 20345:2011 (S4) • 1.2kg [based on size 42]

76690 White
4-12 (37-47)

70557 Green
4-12 (37-47)



- SRC slip-resistant PVC outsole
- Waterproof PVC upper
- Steel toe - 200 joules
- Regular fit

[VIEW CERTIFICATE](#)

[ADDITIONAL IMAGES](#)

**CE CERTIFIED
STYLES**

Guardian IV

EN ISO 20345:2011 (S4) • 1kg [based on size 42]

2017 White
4-12 (37-47)

2018 Green
4-12 (37-47)



- Superior SFC slip-resistant outsole
- Waterproof PVC upper
- Steel toe - 200 joules
- Removable cushioned insole
- Regular fit

[VIEW CERTIFICATE](#)

[ADDITIONAL IMAGES](#)



THE NUMBER 1 CHOICE FOR BUTCHERS
#1 CHOICE

Sentinel

EN ISO 20345:2011 (S4) • 1kg [based on size 42]

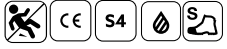
2010B White
4-11 (37-46)

2011 Green
4-11 (37-46)

2012 Blue
4-11 (37-46)

2013 Red
4-11 (37-46)

2014 Yellow
4-11 (37-46)



**CE CERTIFIED
STYLES**

- Superior SFC slip-resistant outsole
- Waterproof PU upper
- Steel toe - 200 joules
- Removable cushioned insole
- Regular fit

[VIEW CERTIFICATE](#)

[ADDITIONAL IMAGES](#)



THE ORIGINAL SLIP-RESISTANT FOOTWEAR SINCE 1984



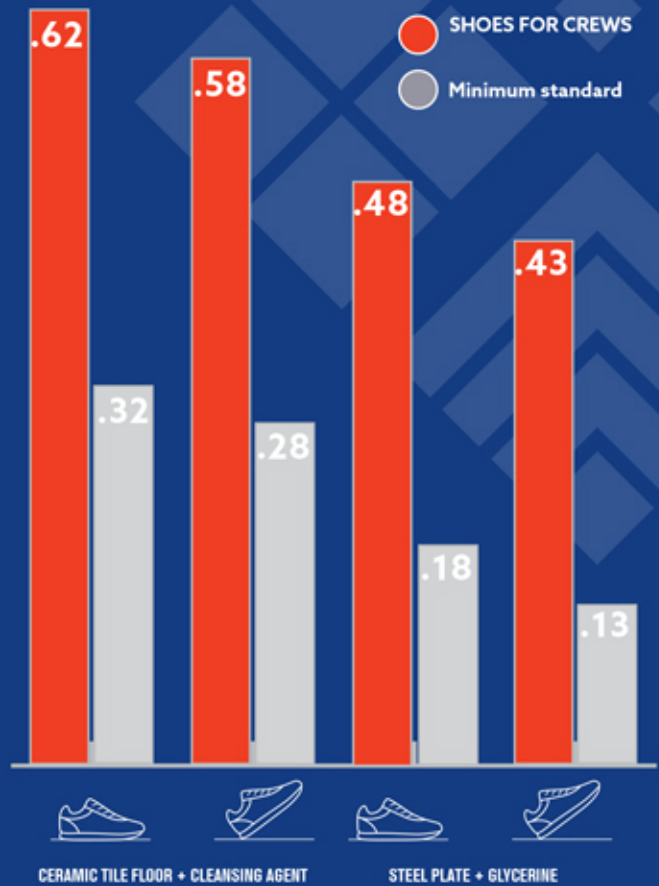
THE SHOE THAT GRIPS



Rated Excellent



SHOES FOR CREWS SRC RESULTS GREATLY EXCEED INDUSTRY STANDARDS



Slip Resistance Test EN ISO 13287:2012, performed by TUV Rheinland LGA Products GmbH in Leipzig, Germany during January 2017. * On a scale where 0.0 is the absence of friction and 1.0 is very high friction (e.g. dry carpet), SFC rated .63 - more than tripling the .18 minimum standard. All SFC shoes use the Shoes For Crews patented slip-resistant outsole. Product tested: Bridgetown 28740.

camelforme, s.l.

c/ Lorenza Correa, 13
28039 - Madrid (España)

Tel: 913 117 905 - 913 980 373

Fax: 913 112 837

info@camelforme.es - <https://camelforme.es>



espíritu
camelforme

